

HUNTER 150



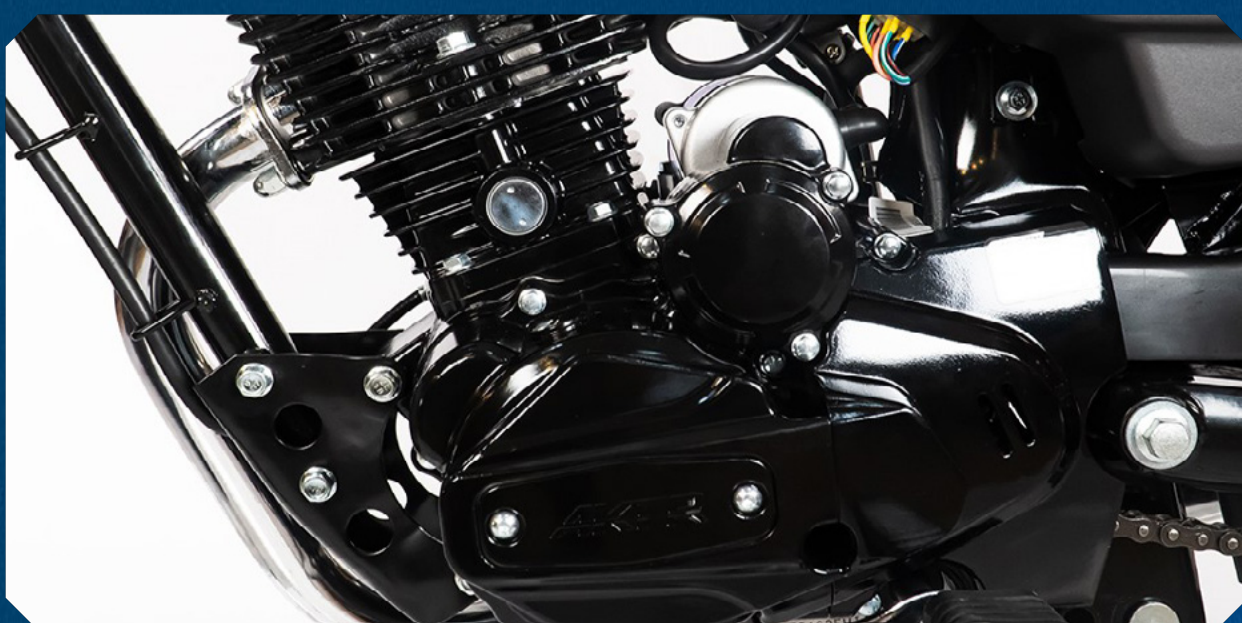
The Hunter 150 - A rugged, powerful and versatile motorcycle built for those who demand performance. With its 150cc engine and dual rear shock absorbers, it delivers stable handling on any terrain. Its practical design and 14-liter fuel tank combine everyday versatility with efficiency.

MAXIMUM
POWER

11,4 Hp
α 8.500 rpm

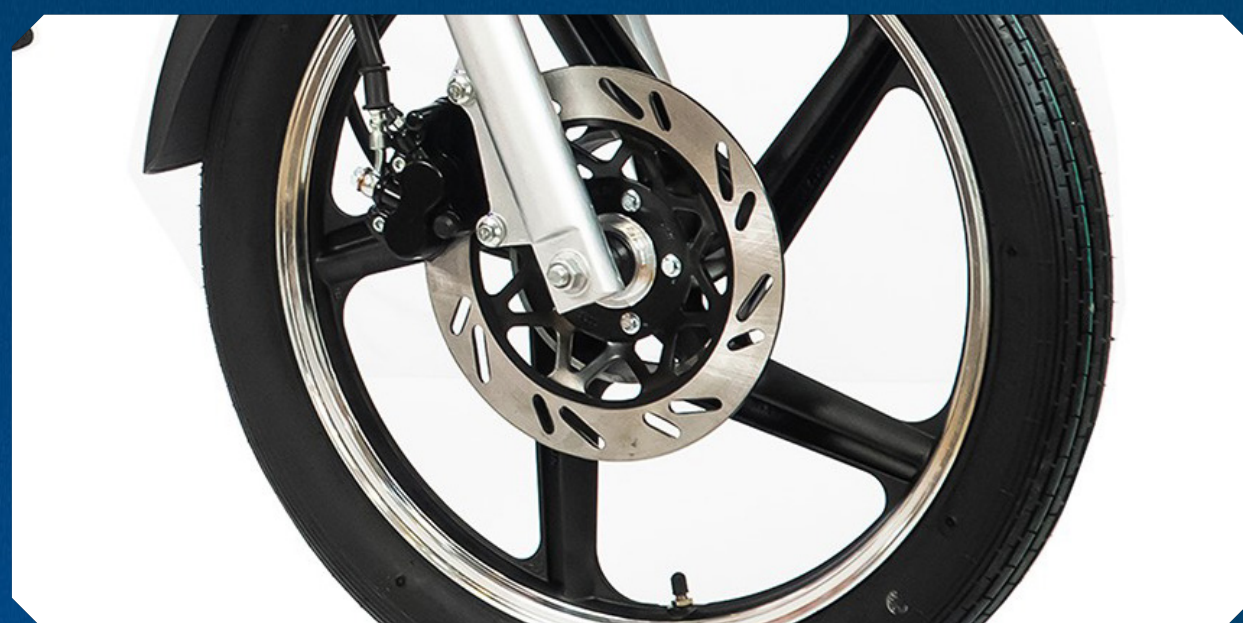
MAXIMUM
TORQUE

10 Nm
α 7.500 rpm



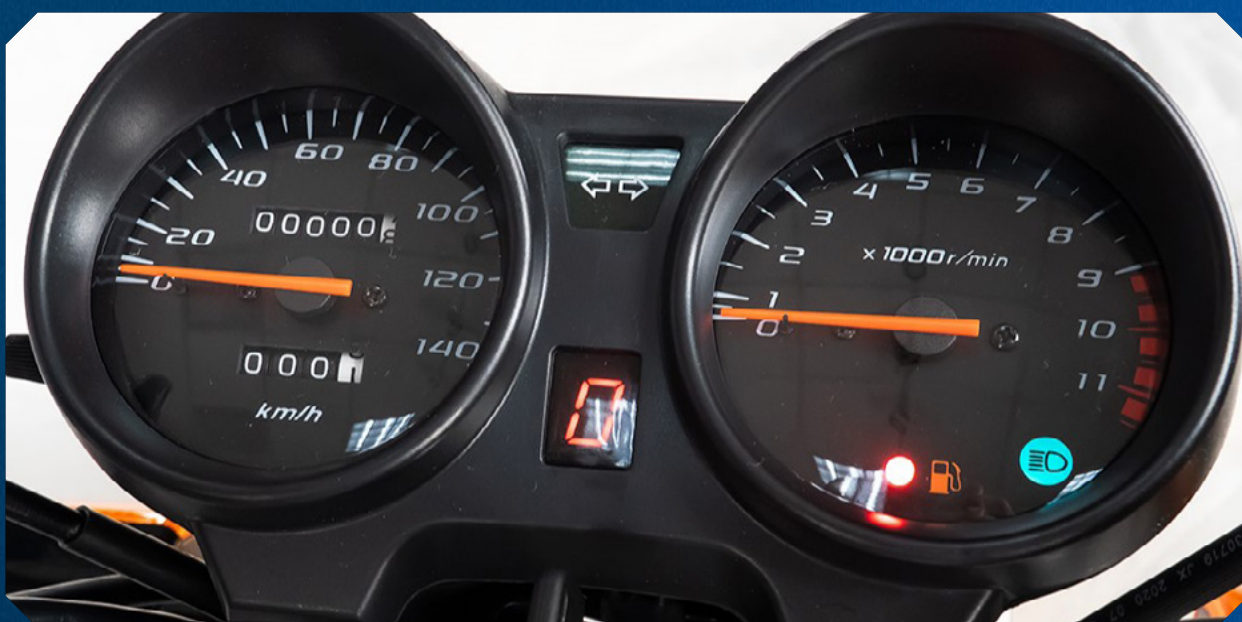
Powerful & Efficient Engine

The Hunter 150 features an air-cooled 149.5cc single-cylinder engine that delivers: 11.4 HP @ 8,500 RPM and 10 Nm torque @ 7,500 RPM. Perfect for daily work demands.



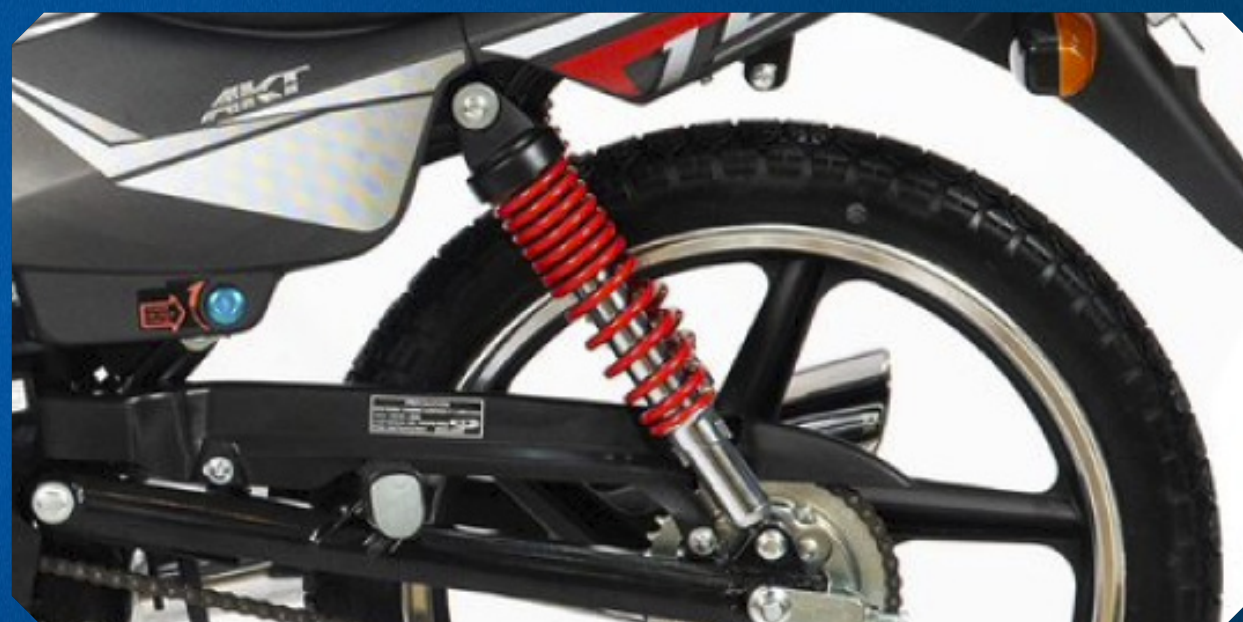
Secure stopping power

Ventilated front disc brake for secure stopping power.



Speedometer

Analog speedometer with digital gear indicator and low-fuel warning light



Dual Rear Suspension

Provides superior stability and comfort on rough terrain.

Available colors



BLACK



BLUE



RED



GRAY

Technical data

Engine	CG OHV 4T
Displacement (CC)	149.5 CC
Power (Hp)	11.4 HP / 8.500 RPM
Torque (Nm)	10 N.M. / 7.500 RPM
Compression rate	9,2:1
Fuel supply	Carburator
Gear	5 gears
Ignition	Electric - crank
Front brake	Perforated disc
Rear brake	Drum
Front suspension	Hydraulic telescopic
Rear suspension	Dual adjustable shock absorbers
Front wheels	2,75-18
Rear wheels	3,00-18
Wheels type	Tubetype
Dry weight (kg)	125 Kg.
Fuel tank capacity	14 L.